



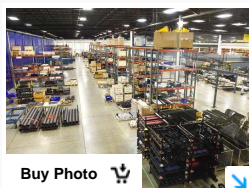
Geringhoff to add second assembly line

Matt Perkins, mperkins@stcloudtimes.com Published 6:00 p.m. CT Sept. 24, 2017

f 13



Geringhoff diversifying combine head production Wochit



Buy Photo

(Photo: Jason Wachter, jwachter@stcloudtimes.com)

f 13 | TWEET | LINKEDIN | COMMENT | EMAIL | MORE

Local combine header manufacturer Geringhoff is looking to expand its St. Cloud facility and create up to 20 new full-time jobs in the process.

CEO Tosh Brinkerhoff said planned renovations include the addition of a second assembly line which would allow the company to produce draper and corn headers simultaneously.

St. Cloud Economic Development Director Cathy Mehelich said the City Council will consider a resolution Monday night supporting a Minnesota Job Creation Fund application that could seek upwards of \$200,000 in state aid for Geringhoff's project.

The application includes a target objective of 20 new full-time positions created with an average wage of \$21 per hour, Brinkerhoff said, but he added that the company plans to proceed with its expansion plans even it is not awarded state funds.

"So our timeline is this fall to early winter we'd make those expanses in the factory," Brinkerhoff said. "So we would be up and going with our two dedicated assembly lines

TOP VIDEOS



Two must-have apps that make investing easy

1:47



Two low-risk investments every Millennial should know

2:07



Tax 101: A brief history of taxation

2:19



There's no business like snow business

1:02



by the January 2018 timeframe."



Geringhoff President and CEO Tosh Brinkerhoff talks about the company's new draper heads which harvest smaller grains like soy and wheat Friday, June 30, at the St. Cloud manufacturing facility. (Photo: Jason Wachter, jwachter@stcloudtimes.com)

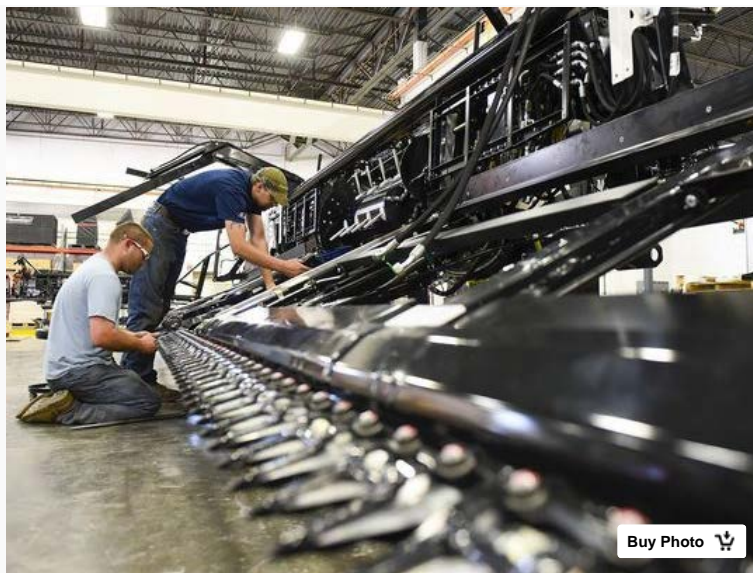
Brinkerhoff said equipment and technological upgrades are included in the expansion, but the manufacturing plant's footprint will not change.

"We are doing three main things," Brinkerhoff said. "We are extending an overhead crane so it works on both assembly lines, we're adding a mezzanine for parts storage and the other one is a vertical lift, which is a parts optimization storage component."

[READ MORE: Geringhoff diversifies production line](#)

Mehelich said the city supports Geringhoff's efforts to further diversify its production line.

"When we see diversification among industries, it's a very strong sign," Mehelich said, pointing out that Geringhoff's draper line gives it a strong foothold in the small grain marketplace. "That way, they aren't dependent on one market and one industry should things change outside their control. So it's a very positive sign to see them diversify into other markets."



Buy Photo 

Jarred Asbridge and David Olson assemble a new draper head for small grain at Geringhoff Friday, June 30, at the St. Cloud manufacturing facility. (Photo: Jason Wachter, jwachter@stcloudtimes.com)

An economic development program funded by the state, the Minnesota Job Creation Fund awards funding based on application scoring by the Minnesota Department of Employment and Economic Development. Cities serve as local government project sponsors and facilitate the application process.

Mehelich said the city has achieved funding through the program for companies like Microbiologics, Dubow Textile Inc. and Park Industries. All of those companies have been successful in achieving expansion goals, she said.

Geringhoff, which opened in 2013, employs 34 full-time workers at its St. Cloud facility.

"If anything, this will help stabilize their employment base in the future, because it won't be dependent on only one market," Mehelich said. "We always like to see that in industries, their ability to diversify."

 13 |  |  |  |  | 
CONNECT | TWEET | LINKEDIN | COMMENT | EMAIL | MORE